

Check the back page for new products and accessories!



CAUTION

CONNECT REVERSING SWITCH
SEE INSTALLATION INSTRUCTIONS.

MOUNT OPERATOR 8 FT. OR MORE ABOVE FLOOR LEVEL. LOCATE CONTROL STATION SO THAT DOOR IS WITHIN CLEAR SIGHT OF PERSON OPERATING THE CONTROL. FOR INDOOR USE ONLY. OPERATE DOOR ONLY WHEN FULLY VISIBLE. PROPERLY ADJUSTED IN ACCORDANCE WITH INSTRUCTIONS. DO NOT PERMIT CHILDREN TO PLAY IN AREA OF DOOR. SEE INSTRUCTION MANUAL.

DISCONNECT POWER SUPPLY
BEFORE REMOVING COVER

ATTENTION

CONNECTEZ L'INTERRUPTEUR
D'INVERSION DE COURSE
VOIR LA NOTICE D'INSTALLATION.

INSTALLER L'OUVERTEUR À AU MOINS 2.44M (8 FT.) DU SOL. LOCALISER LA STATION DE CONTRÔLE DE FAÇON À CE QUE LA PORTE SOIT CLAIREMENT VISIBLE PAR L'UTILISATEUR. POUR UTILISATION INTÉRIEURE SEULEMENT. FAIRE FONCTIONNER LA PORTE QUE LORSQU'ELLE EST COMPLÈTEMENT VISIBLE, CORRECTEMENT AJUSTÉE ET LORS DE TOUTES INSTRUCTIONS. NE PAS PERMETTRE AUX ENFANTS DE JOUER DANS L'ARÉE DE LA PORTE. VOIR MANUEL D'INSTRUCTION.

DÉCONNECTEZ LE CIRCUIT
D'ALIMENTATION AVANT D'OUVRIR
LA BOÎTE DE CONTRÔLE



Quality Pros Can Count On...

At Micanan Systems we manufacture a complete line of Commercial/Industrial garage door operators for the North American door industry. Whether you require a Trolley, Jackshaft or Slide Door Operator, Micanan has the right product for your installation. We offer a selection of custom modifications, accessories and spare parts for all your operator needs.

PRO-LJ



PRO-LH/LHA



- High starting torque 1/2HP motor with thermal protection
- Heavy duty 4L V-belt and #41 roller chain & sprocket reductions
- Permanently lubricated ball bearings on all drive shafts
- 1" output shaft on final drive
- Adjustable friction clutch
- Left or right hand mounting
- Magnetic solenoid brake (std on PRO-LJ, PRO-LH, optional on PRO-LHA)
- Mechanical braking system (PRO-LHA)
- #41 roller chain drive & sprockets
- LJ incorporates a floor level disconnect, LH & LHA incorporate a floor level disconnect with emergency chain hoist, all with electrical cut-out switch.
- * **Incorporates interface module for UL 325 compliance (M)**

Limited duty belt drive jackshaft operator for high lift, vertical lift sectional doors and small rolling doors and grilles.

PRO-J/H



PRO-HHD



- Continuous duty industrial motor 1/3, 1/2, 3/4 and 1HP
- Heavy duty reversing contactor with electrical interlock (M)
- Heavy duty 5L V-belt and #41 roller chain & sprocket reductions.
- Permanently lubricated ball bearings on all drive shafts
- 1" output shaft on final drive
- Full overload protection
- Adjustable friction clutch
- Magnetic solenoid brake (std on PRO-HHD, optional for PRO-J, PRO-H)
- Mechanical braking system (PRO-J, PRO-H)
- #50 roller chain drive & sprockets
- J incorporates a floor level disconnect, H & HHD incorporate a floor level disconnect with emergency chain hoist, all with electrical cut-out switch.
- Left or right hand mounting
- * **Available with new UL 325 SMART 10.0 Logic Board (E)**

Industrial, continuous, duty belt drive jackshaft operator for high lift, vertical lift sectional doors and rolling doors.

PRO-GJ



- High starting torque 1/2HP motor with thermal protection
- Worm gear in oil bath reducer
- #41 roller chain drive & sprockets
- Floor level disconnect for emergency manual operation
- Left and right hand mounting (must specify)
- * **Incorporates interface module for UL 325 compliance (M)**

PRO-EJ/EHJ



- Continuous duty industrial motor 1/3, 1/2HP
- Permanently lubricated ball bearings on all drive shafts
- Built-in mechanical load sensing mechanism to eliminate jamming & damage to a locked rolling grill & door operator
- Emergency egress capability; floor level disconnect allows for opening a grill by manual operation or by door spring tension
- Emergency chain hoist with floor level disconnect & electrical cut-out manual operation (EHJ)
- #50 roller chain drive & sprockets
- * **Heavy duty reversing contactor with electrical interlock (M)**
- Heavy duty 5L V-belt & #41 roller chain & sprocket reductions
- Full overload protection
- Adjustable friction clutch
- Mechanical braking system
- Magnetic solenoid brake (Optional)

Limited duty gearhead jackshaft for small rolling foors, shutters and grilles.

Industrial, continuous duty belt drive jackshaft operator for rolling doors and grilles. Built-in mechanical load sensing feature and emergency egress.

PRO-GH



PRO-GHC



- * Continuous duty industrial motor 1/2, 3/4, 1, 1.5, 2, 3 and 5HP (GH only)
- Heavy duty reversing contactor with electrical interlock (M)
- Primary drive worm gear speed reducer in oil bath
- Full overload protection
- Adjustable in-line friction clutch (Optional)
- Magnetic solenoid brake standard
- #50 roller chain drive & sprockets
- Reinforced frame & cast iron pillow block bearings (PRO-GHC)
- Emergency chain hoist w/ electrical cut-out switch for manual operation
- Universal left or right hand mounting
- * **Available with new UL 325 SMART 10.0 Logic Board (E)**

Industrial, continuous, duty worm gear drive jackshaft operator with chain hoist for large high lift, vertical lift sectional doors and rolling steel doors.

UNIVERSAL FEATURES

24V fused secondary control circuit - External radio control terminal strip - Three button control station - Adjustable rotary limit switches
Powder metal limit cams - Baked on dark grey finish - Built in radio receiver now available with all SMART 10.0 Logic Boards

* **When ordering a MICANAN operator, please specify (M) for Electro-mechanical control circuit with interface module or (E) for Full function SMART 10.0 Logic Board**

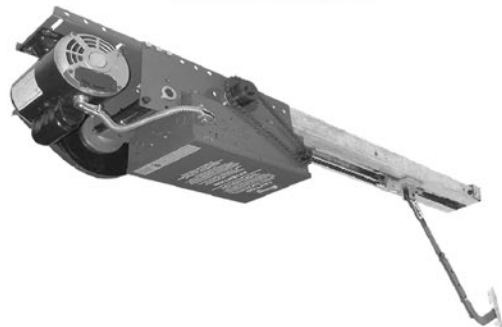
PRO-LT



Limited duty belt drive trolley operator for standard lift sectional doors.

- High starting torque 1/2HP motor with thermal protection
- Heavy duty 4L V-belt & #41 roller chain & sprocket reductions
- Permanently lubricated ball bearings on all drive shafts
- 1" output shaft on final drive
- Adjustable friction clutch
- Emergency quick release disconnect for manual operation
- #410 roller chain drive & sprockets
- Magnetic solenoid brake (Optional)
- * **Incorporates interface module for UL 325 compliance (M)**

PRO-T/TB/SD



Industrial, continuous duty belt drive trolley operator for standard lift sectional and sliding doors

- Continuous duty industrial motor 1/3, 1/2, 3/4 and 1HP
- Heavy duty reversing contactor with electrical interlock (M)
- Heavy duty 5L V-belt & #41 roller chain & sprockets reductions
- Permanently lubricated ball bearings on all drive shafts
- 1" output shaft on final drive
- Full overload protection
- Adjustable friction clutch
- Sliding door application & hardware (PRO-SD)
- Magnetic solenoid brake standard on PRO-TB & PRO-SD
- #410 roller chain drive on 1/3 & 1/2 HP PRO-T AND PRO-TB models
- #41 roller chain drive on all PRO-SD & 3/4 & 1 HP PRO-T AND PRO-TB.
- Emergency quick release disconnect for manual operation
- * **Available with new UL 325 SMART 10.0 Logic Board (E)**

PRO-APT



Industrial, continuous duty belt drive trolley operator for standard lift sectional doors.

- Continuous duty industrial motor 1/2 and 3/4 HP
- Heavy duty reversing contactor with electrical interlock (M)
- Heavy duty 5L V-belt & #41 roller chain & sprocket reductions
- Full overload protection
- Adjustable friction clutch
- Magnetic solenoid brake (Optional PRO-APT)
- 3/4" & 1" pillow block bearings on pulley & drive shaft
- Heavy duty trolley idler c/w 41B12 sprocket
- Low profile 9" clearance design for apartment applications
- Timer to close and time delay on reverse standard
- Red & Green lights feature (optional)
- Quick disconnect trolley carriage
- * **Available with new UL 325 SMART 10.0 Logic Board (E)**

PRO-GT/GSD



Industrial, continuous duty worm gear trolley operator for large standard lift sectional and sliding doors

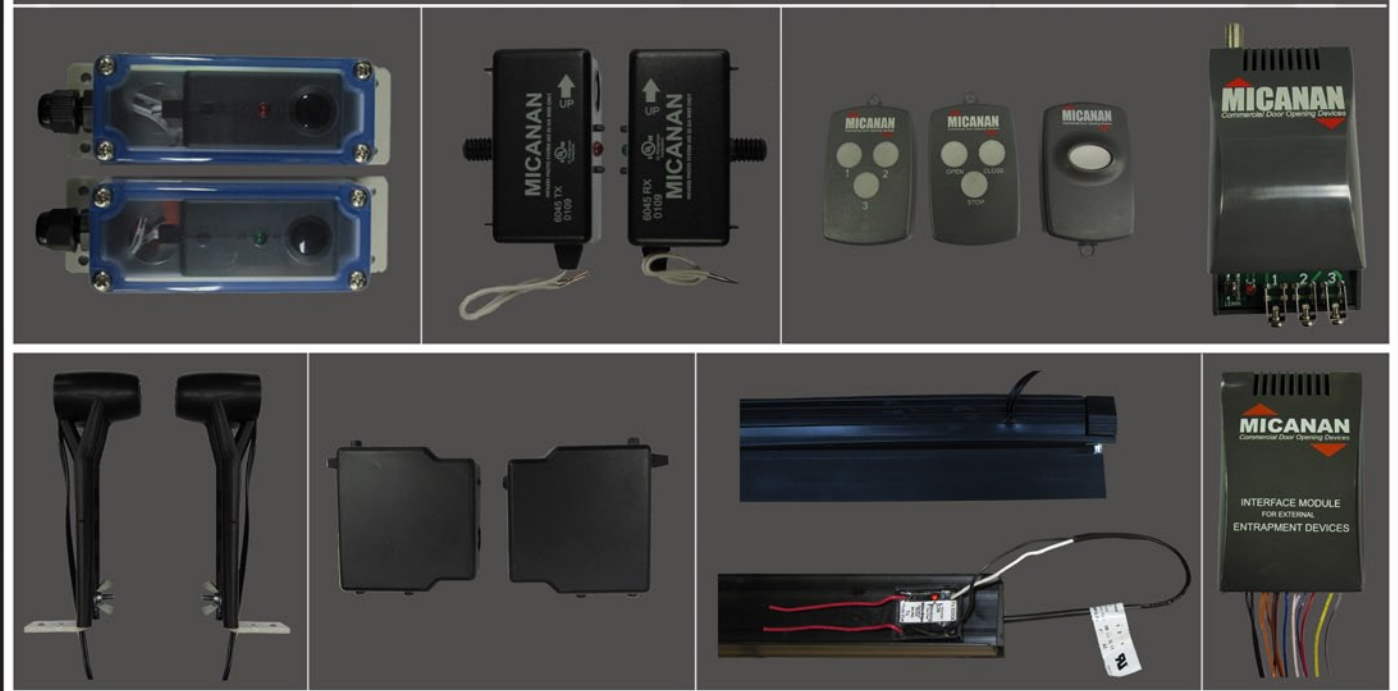
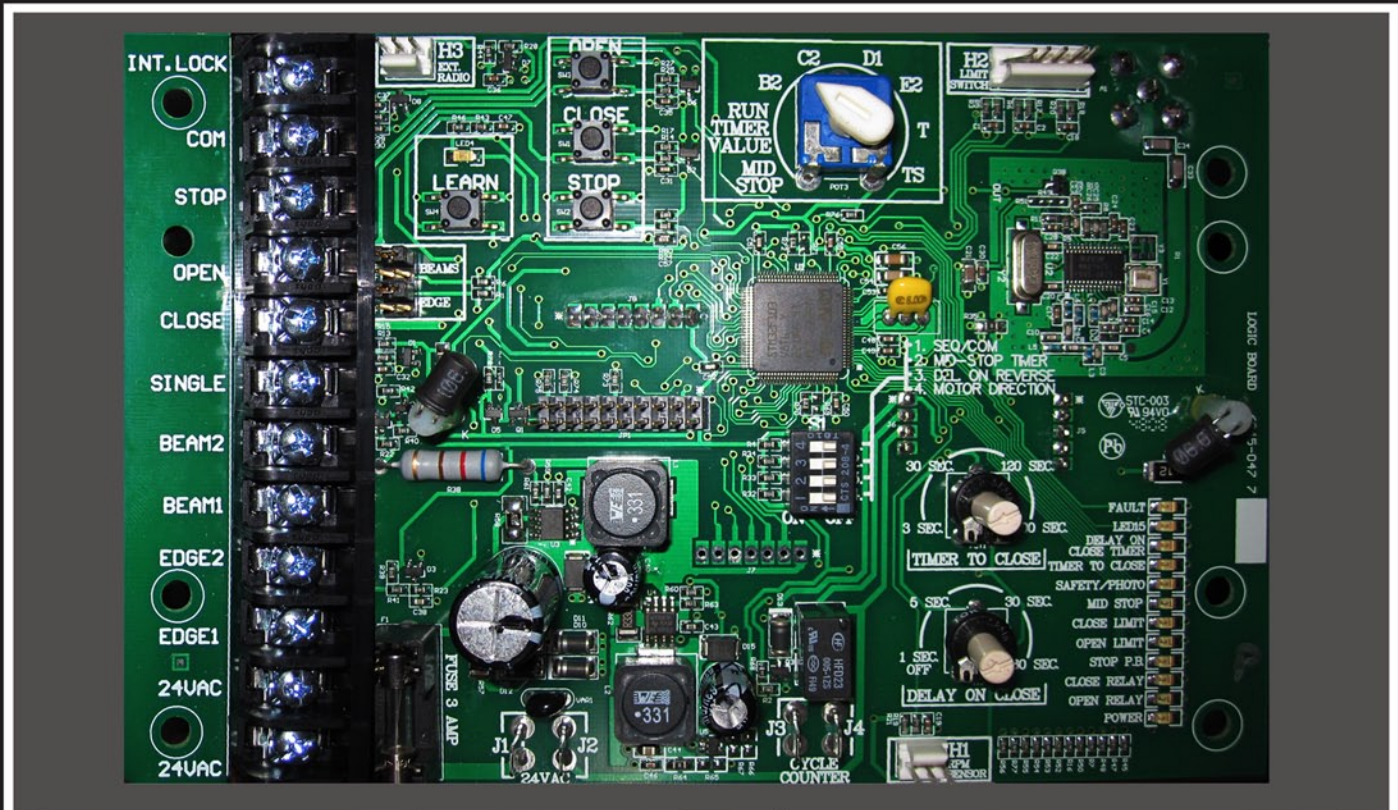
- Continuous duty industrial motor 1/2, 3/4, 1, 1.5 and 2HP
- Heavy duty reversing contactor with electrical interlock (M)
- Primary reduction worm gear speed reducer in oil bath, secondary reduction #41 roller chain & sprockets
- Permanently lubricated ball bearings on all drive shafts
- 1" output shaft on final drive
- Full overload protection
- Adjustable in-line friction clutch
- Magnetic solenoid brake standard
- #41 roller chain drive
- Emergency quick release disconnect for manual operation
- Sliding door application & hardware (PRO-GSD)
- * **Available with new UL 325 SMART 10.0 Logic Board (E)**

UNIVERSAL FEATURES

24V fused secondary control circuit - External radio control terminal strip - Three button control station - Adjustable rotary limit switches
Powder metal limit cams - Baked on dark grey finish - Built in radio receiver now available with all SMART 10.0 Logic Boards

* **When ordering a MICANAN operator, please specify (M) for Electro-mechanical control circuit with interface module or (E) for Full function SMART 10.0 Logic Board**

INTRODUCING the NEW SMART 10.0 UL 325 COMPLIANT LOGIC BOARD



MICANAN HEAD OFFICE: 1380 St-Regis Blvd. Dorval, QC H9P 2T5 Canada | Tel: (514) 822-1116 | Toll-Free: 1-877-888-1116 | Fax: (514) 822-1118 | Toll-Free: 1-877-888-1118

MICANAN PHOENIX: 1236 W. Southern Ave. Suite 104 Tempe, Arizona USA 85282 | Tel: (480) 557-0070 | Toll-Free: 1-888-816-8584 | Fax: (480) 557-8488

MICANAN ATLANTA: 2885 N. Berkeley Lake Rd Suite 7 Duluth, Georgia USA 30096 | Tel: (678) 584-2543 | Toll-Free: 1-800-798-2543 | Fax: (678) 584-2544

www.micanan.com

